

Fredrik Rasten

Fuse modulations

(2020)

Fuse modulations

For a quartet of sustaining instruments or voices

Composed in June 2020

for Stefan Thut, Félicie Bazelaire, Léo Dupleix and myself

The piece evolves freely with long notes, still keeping a sense of melodic movement.

In an alternating manner, the performers are making melodic moves and thereby changing the overall sounding chord.

The dynamic should be quite consistent throughout, not quiet, not loud, but full and resonant, and somehow serving the task of tuning.

With this in mind, small dynamic variations are up to the performers and their own sense of phrasing.

Sometimes one performer has a series of changes alone, highlighting a melody or phrase.

Where these melodic series in one instrument occur, the notes can progress a little faster than the general pacing in the piece.

Notes / Instructions

There are no note values in the score, but for any of the voices, a note or pause lasts until it is succeeded by a new note or pause in the given voice.

Note durations are free / flexible, and the graphic spacing between notes is generally not a guide to the pace of the music, but merely showing the succession of the note or pause entries.

The music should unfold with a focus on stability of tuning, combined with a sense of melodic movement.

Each sonority should last long enough to be tuned and then perceived for a while in their “tuned state”, but without the music ending up being too static - it should have a sense of forward movement. When a sonority is difficult to tune, take your time to adjust. The searching and fine tuning is an intrinsic musical and human part of this music. When the tuning is stabilized, take some seconds to dwell in the tuned sonority. As a general rule - more time should be spent *in* the intended, tuned sonority than in the searching / tuning process.

When a change occurs within one part, the movement *can generally* be a little bit faster, like a melodic phrase. This is emphasized with legato bows.

The end of a note should primarily be followed by a little pause (a few seconds long) before entering the new note. However, glissandi between the notes, with or without a little pause between them, is a viable variation.

Cent deviations from 12-tone equal temperament are written under each note.

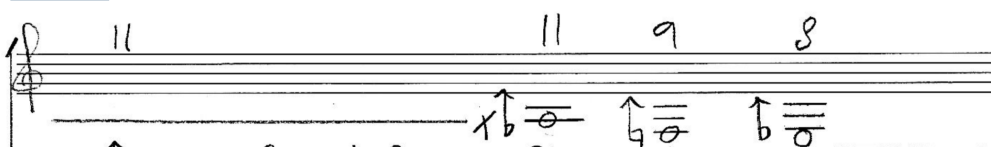
The accidentals belong to the Extended Helmholtz-Ellis JI pitch notation by Marc Sabat and Wolfgang von Schweinitz.

More information about the accidentals: <http://www.marcsabat.com/pdfs/notation.pdf>

Pitch ranges

highest to lowest note in each voice (shown by excerpts from the score)

1st voice:



(from eb raised by a syntonic comma)

(AB-FUND)

(to bb' raised by a syntonic comma)

2nd voice:

(from Bb raised by a syntonic comma)

(to gb' lowered by a septimal comma and raised by a syntonic comma)

3rd voice:

(from Db raised by a syntonic comma)

(to f' raised by a syntonic comma)

4th voice:

(from pythagorean D)

(to pythagorean a)

Fuse Modulations

FREDRIK RASTEN
2020

Handwritten musical notation for the first system, consisting of four staves. The notation includes various symbols and numbers: a sharp sign with a circle and '+6' on the top staff; a flat sign with a circle and '-29' on the second staff; a sharp sign with a circle and '-10' on the third staff; a sharp sign with a circle and '-12' on the fourth staff; and a circled '+42' on the fifth staff.

+2

Handwritten musical notation for the second system, consisting of four staves. The notation includes various symbols and numbers: a flat sign with a circle and '-29' on the top staff; a sharp sign with a circle and '+6' on the second staff; a sharp sign with a circle and '+4' on the third staff; and circled '+4' and '+2' on the fourth staff.

Handwritten musical notation for the third system, consisting of four staves. The notation includes various symbols and numbers: a circle with '+2' on the top staff; a circle with '-2' on the second staff; a sharp sign with a circle and '-14' on the third staff; a flat sign with a circle and '-33' on the fourth staff; and a circle with '+4' on the fifth staff.

Handwritten musical notation on four staves. The first staff has a circled note with "-2" below it. The second staff has a circled note with "-33" below it and another circled note with "+2" below it. The third staff has a circled note with "-31" below it and another circled note with "-31" below it. The fourth staff is empty.

Handwritten musical notation on four staves. The first staff has a circled note with "+2" below it, a circled note with "+16" below it, and a circled note with "B-35" below it. The second staff has a circled note with "+14" below it and another circled note with "+18" below it. The third staff has a circled note with "+16" below it. The fourth staff is empty.

Handwritten musical notation on four staves. The first staff has a circled note with "Bb+39" below it. The second staff has a circled note with "-33" below it. The third staff has a circled note with "-2" below it. The fourth staff has a circled note with "+14" below it and another circled note with "-2" below it. A circled number "2" is at the bottom center.

Handwritten musical notation on four staves. The first staff contains two notes with the label $Bb+39$ below them. The second staff contains two notes with the labels $\#-14$ and $+2$ below them. The third staff is empty. The fourth staff contains one note with the label $\#-16$ below it.

Handwritten musical notation on four staves. The first staff contains one note with the label $Bb+39$ below it. The second staff contains one note with the label $\#-14$ below it. The third staff contains one note with the label -2 below it. The fourth staff is empty.

Handwritten musical notation on four staves. The first staff contains five notes with the labels -18 , $Bb+39$, $\#-29$, -18 , -49 , and $Bb+39$ below them. The second staff is empty. The third staff contains one note. The fourth staff is empty.

Handwritten musical notation for the first system. It consists of four staves. The top two staves are treble clefs. The first staff has three notes: a sharp sign followed by a circle with a horizontal line above it, a sharp sign followed by a circle with a horizontal line above it, and a sharp sign followed by a circle with a horizontal line above it. Below the first note is '-12', below the second is '-29', and below the third is '+49'. The third staff is a bass clef with a circle containing '0' and '-2' below it. The fourth staff is a bass clef with a circle containing '0'.

Handwritten musical notation for the second system. It consists of four staves. The top two staves are treble clefs. The first staff has two notes: a sharp sign followed by a circle with a horizontal line above it, and a sharp sign followed by a circle with a horizontal line above it. Below the first note is '+6', and below the second is '-10'. The second staff has four notes: a flat sign followed by a circle with a horizontal line above it, a sharp sign followed by a circle with a horizontal line above it, a sharp sign followed by a circle with a horizontal line above it, and a sharp sign followed by a circle with a horizontal line above it. Below the first note is '-29', below the second is '-12', and below the fourth is '+6'. The third staff has a sharp sign followed by a circle with a horizontal line above it, and a circle containing '0'. Below it is 'c+42'. The fourth staff is a bass clef with a circle containing '0' and '+2' below it.

Handwritten musical notation for the third system. It consists of four staves. The top two staves are treble clefs. The first staff has two notes: a flat sign followed by a circle with a horizontal line above it, and a circle with a horizontal line above it. Below the first note is '-29', and below the second is '+2'. The second staff has a circle with a horizontal line above it and '+4' below it. The third staff is a bass clef with a circle containing '0'. The fourth staff is a bass clef with a circle containing '0' and '+2' below it. At the bottom center, there is a circled number '4'.

Handwritten musical notation on four staves. The first two staves are treble clef, the last two are bass clef. Notes are marked with accidentals and numbers: -14, -33, -2, +4.

Handwritten musical notation on four staves. The first two staves are treble clef, the last two are bass clef. Notes are marked with accidentals and numbers: -31, -33, +2, -2, +2.

Handwritten musical notation on four staves. The first two staves are treble clef, the last two are bass clef. Notes are marked with accidentals, numbers, and arrows: +16, +14, +18, +18, +16, +14.

Handwritten musical notation on four staves. The first two staves are treble clef, and the last two are bass clef. It features various notes with stems and arrows, and numerical values: +14, +16, -19, -4, and +10.

Handwritten musical notation on four staves. The first two staves are treble clef, and the last two are bass clef. It features various notes with stems and arrows, and numerical values: +2, +16, +14, +2, and -2.

Handwritten musical notation on four staves. The first two staves are treble clef, and the last two are bass clef. It features various notes with stems and arrows, and numerical values: +16, -33, +16, +4, and B-35.

(6)

Handwritten musical notation on a four-staff system. The top two staves are treble clef, and the bottom two are bass clef. The first bass staff has a note with an upward arrow and '+18' below it. The second bass staff has a note with an upward arrow and '+14' below it.

Handwritten musical notation on a four-staff system. The top two staves are treble clef, and the bottom two are bass clef. The first treble staff has a note with an upward arrow and 'A-39' below it. The second treble staff has a note with an upward arrow and '+12' below it. The third treble staff has a note with a downward arrow and '-4' below it, and another note with an upward arrow and '-8' below it. The first bass staff has a note with an upward arrow and '+10' below it. The second bass staff has a note with an upward arrow and '+10' below it.

Handwritten musical notation on a four-staff system. The top two staves are treble clef, and the bottom two are bass clef. The first treble staff has a note with a downward arrow and '-19' below it, and another note with an upward arrow and '+14' below it. The second treble staff has a note with a downward arrow and '-19' below it. The first bass staff has a note with an upward arrow and '+16' below it. The second bass staff has a note with an upward arrow and '+10' below it. The third bass staff has a note with an upward arrow and '+16' below it. A circled '7' is written at the bottom center.

Handwritten musical notation on a four-staff system. The top staff is a treble clef with a whole note on the second line. The second staff has a bass clef with a whole note on the second line, marked with a flat and a double flat (bb), and an upward arrow. Below it is the number -17. The third staff has a bass clef with a whole note on the second line, marked with a flat and a double flat (bb), and an upward arrow. Below it is the number +18. The fourth staff is empty. To the right of the second staff, there is a treble clef with a whole note on the second line, marked with a flat and a double flat (bb), and an upward arrow. Below it is the number +2. To the right of the third staff, there is a treble clef with a whole note on the second line, marked with a flat and a double flat (bb), and an upward arrow. Below it is the number F#-33.

Handwritten musical notation on a four-staff system. The top staff is a treble clef with a whole note on the second line, marked with a flat and a double flat (bb), and an upward arrow. Below it is the number -15. The second staff has a bass clef with a whole note on the second line, marked with a flat and a double flat (bb), and an upward arrow. Below it is the number +26. The third staff has a bass clef with a whole note on the second line, marked with a flat and a double flat (bb), and an upward arrow. Below it is the number +18. The fourth staff has a bass clef with a whole note on the second line, marked with a flat and a double flat (bb), and an upward arrow. Below it is the number +14. To the right of the second staff, there is a treble clef with a whole note on the second line, marked with a flat and a double flat (bb), and an upward arrow. Below it is the number B-35.

Handwritten musical notation on a four-staff system. The top staff is a treble clef with a whole note on the second line, marked with a flat and a double flat (bb), and an upward arrow. Below it is the number +18. The second staff has a bass clef with a whole note on the second line, marked with a flat and a double flat (bb), and an upward arrow. Below it is the number -19. The third staff has a bass clef with a whole note on the second line, marked with a flat and a double flat (bb), and an upward arrow. Below it is the number +29. The fourth staff has a bass clef with a whole note on the second line, marked with a flat and a double flat (bb), and an upward arrow. Below it is the number +16. To the right of the second staff, there is a treble clef with a whole note on the second line, marked with a flat and a double flat (bb), and an upward arrow. Below it is the number +33.

Handwritten musical notation on four staves. The top staff has two notes with upward arrows and labels '+16'. The second staff has two notes with upward arrows and labels '+31' and '+27'. The third staff has one note with an upward arrow and label '+29'. The bottom staff is empty.

Handwritten musical notation on four staves. The top staff contains a sequence of seven notes with upward arrows and labels: '+12', 'Bb-32', '+6-21', '+16', '+31', '+6-21', and '+29'. The second and third staves are empty. The bottom staff is empty.

Handwritten musical notation on four staves. The top staff is empty. The second staff is empty. The third staff contains a sequence of eight notes with upward arrows and labels: '+29', 'B-4', '+27', '+27', '+27', '+14', and '+25'. The bottom staff is empty.

Handwritten musical notation for the first system, consisting of four staves. The top staff is empty. The second staff has two notes with upward arrows and fret numbers +16 and +27. The third staff has one note with an upward arrow and fret number +16. The fourth staff has three notes with upward arrows and fret numbers +12, +14, and +12.

Handwritten musical notation for the second system, consisting of four staves. The top staff is empty. The second staff has one note with an upward arrow and fret number +12. The third staff has three notes with upward arrows and fret numbers C-23, C-23, E-6, and +27. The fourth staff has one note with an upward arrow and fret number +25.

Handwritten musical notation for the third system, consisting of four staves. The top staff is empty. The second staff has two notes with upward arrows and fret numbers +29 and C-23. The third staff has four notes with upward arrows and fret numbers E-6, +14, C-23, and +14. The fourth staff is empty.

Handwritten musical notation for the first system, consisting of three staves. The top staff has a treble clef and contains two notes with upward arrows and labels '+16' and 'C-23'. The middle staff has a bass clef and contains one note with an upward arrow and label '+12'. The bottom staff has a bass clef and contains three notes with upward arrows and labels '+14', '+25', and '+14'. The first note in the bottom staff is also labeled '+27'.

Handwritten musical notation for the second system, consisting of three staves. The top staff has a treble clef and contains two notes with upward arrows and labels '+16' and 'C-23'. The middle staff has a bass clef and contains one note with an upward arrow and label '+27'. The bottom staff has a bass clef and contains three notes with upward arrows and labels '+25', '+31', and '+25'. The first note in the bottom staff is also labeled '+29'.

Handwritten musical notation for the third system, consisting of three staves. The top staff has a treble clef and contains two notes with upward arrows and labels 'x b - o' and 'C-23'. The middle staff has a bass clef and contains one note with an upward arrow and label '+12'. The bottom staff has a bass clef and contains four notes with upward arrows and labels '+12', 'B-4', '+12', and '+25'. The first note in the bottom staff is also labeled '+25'.

Handwritten musical notation on three staves. The top staff (treble clef) has a note with a flat and a circled 'o' with '+29' below it. The middle staff (bass clef) has a note with a flat and a circled 'o'. The bottom staff (bass clef) has two notes with flats and circled 'o's, labeled '+12' and '+16' respectively.

Handwritten musical notation on three staves. The top staff (treble clef) has a sequence of notes with flats and circled 'o's, labeled '+29', '+18', '-19', '+12', and '-19'. The middle staff (bass clef) is empty. The bottom staff (bass clef) has two notes with flats and circled 'o's, labeled '+27' and '+16'.

Handwritten musical notation on three staves. The top staff (treble clef) has notes with flats and circled 'o's, labeled 'A-39' and '+14'. The middle staff (bass clef) has notes with flats and circled 'o's, labeled '+14', '+10', and '-21'. The bottom staff (bass clef) has a note with a flat and a circled 'o', labeled '+10'.

Handwritten musical notation on a grand staff. The top staff is empty. The middle staff contains a sequence of notes with stems and flags, and numerical values below them: +10, -21, +14, +12, +14, -4, -2, -6. The bottom staff is empty.

Handwritten musical notation on a grand staff. The top staff is empty. The middle staff contains notes with stems and flags, and numerical values below them: +12, -6, +6. The bottom staff contains a note with a stem and flag, and the value +8 below it.

Handwritten musical notation on a grand staff. The top staff contains notes with stems and flags, and numerical values below them: +10, -43, 8-25, -6. The middle staff contains a note with a stem and flag, and the value +10 below it. The bottom staff is empty.

Handwritten musical notation on three staves. The top staff has a treble clef and a note with a flat and an upward arrow, labeled "D-41". The middle staff has a bass clef and a note with a flat and a downward arrow, labeled "-23". The bottom staff has a bass clef and three notes with flats and upward arrows, labeled "+12", "+12", and "+10".

Handwritten musical notation on three staves. The top staff has a treble clef and a sequence of notes with flats and arrows, labeled "+12", "-23", "-21", "+12", and "B-25". The middle and bottom staves are empty.

Handwritten musical notation on three staves. The top staff has a treble clef and notes with flats and arrows, labeled "-23", "+10", "+12", and "Bb-27". The middle staff has a treble clef and notes with flats and arrows, labeled "-23", "-21", "D-41", and "+10". The bottom staff is empty.

Handwritten musical notation for the first system. It consists of four staves. The top two staves are treble clefs, and the bottom two are bass clefs. The notation includes notes with stems and arrows. Numerical labels are placed below the staves: E+21, B+23, E+21, +10, and D-10. Brackets connect the E+21 and D-10 labels.

Handwritten musical notation for the second system. It consists of four staves. The top two staves are treble clefs, and the bottom two are bass clefs. The notation includes notes with stems and arrows. Numerical labels are placed below the staves: B+23, +25, +8, B+23, B+23, +8, and E+21. Brackets connect the B+23 and E+21 labels.

Handwritten musical notation for the third system. It consists of four staves. The top two staves are treble clefs, and the bottom two are bass clefs. The notation includes notes with stems and arrows. Numerical labels are placed below the staves: Bb-27, +12, +10, D-41, +10, and +8. Brackets connect the +10 and D-41 labels.

Handwritten musical notation for the first system. The top staff is a treble clef with a whole note chord marked with a flat and a circled '0'. The second staff is a treble clef with a whole note chord marked with a flat and a circled '0', and another whole note chord marked with a flat and a circled '0'. The third staff is a bass clef with a whole note chord marked with a flat and a circled '0'. The fourth staff is a bass clef with a whole note chord marked with a flat and a circled '0'. Fret numbers are indicated below the notes: -6, -21, -21, -50, +12, and +12.

Handwritten musical notation for the second system. The top staff is a treble clef with a whole note chord marked with a flat and a circled '0'. The second staff is a treble clef with a whole note chord marked with a flat and a circled '0', and another whole note chord marked with a flat and a circled '0'. The third staff is a bass clef with a whole note chord marked with a flat and a circled '0'. The fourth staff is a bass clef with a whole note chord marked with a flat and a circled '0'. Fret numbers are indicated below the notes: -2, D-41, -6, -23, -4, -6, and +8.

Handwritten musical notation for the third system. The top staff is a treble clef with a whole note chord marked with a flat and a circled '0'. The second staff is a treble clef with a whole note chord marked with a flat and a circled '0', and another whole note chord marked with a flat and a circled '0'. The third staff is a bass clef with a whole note chord marked with a flat and a circled '0', and another whole note chord marked with a flat and a circled '0'. The fourth staff is a bass clef with a whole note chord marked with a flat and a circled '0'. Fret numbers are indicated below the notes: +8, +25, Db-38, +27, E +21, +10, and B+23.

Handwritten musical notation for the first system. It consists of four staves. The top two staves are in treble clef, and the bottom two are in bass clef. The notation includes various notes, accidentals (sharps, flats, double flats), and stems with arrows. Labels include:

- Top staff: $F-25$, $+25$
- Second staff: $Db-38$
- Third staff: $+27$, $+10$
- Bottom staff: $Et21$

Handwritten musical notation for the second system. It consists of four staves. The top two staves are in treble clef, and the bottom two are in bass clef. The notation includes various notes, accidentals, and stems with arrows. Labels include:

- Top staff: $+8$
- Second staff: $D-10$, $D-41$, $D-10$
- Bottom staff: $+8$, $Et21$

Handwritten musical notation for the third system. It consists of four staves. The top two staves are in treble clef, and the bottom two are in bass clef. The notation includes various notes, accidentals, and stems with arrows. Labels include:

- Top staff: $+25$, $+8$, $+10$
- Second staff: $D-41$
- Third staff: $B+23$, -6
- Bottom staff: $+8$